



THE HERITAGE

# 01

## Garden Terrace One

This exquisite family home is designed to take advantage of it all; it assembles the main living and sleeping areas in one expansive level defined by a double-height living-dining area that opens to the private patio and garden and a winter-garden glazed extension that provides an additional living space with a stunning aesthetic.

Spread over 310 sqm and arranged on two levels, the accommodation comprises on the first, lower ground floor level, one primary suite with a walk-through closet, a secondary bedroom with bathroom, a generously sized kitchen with a casual dining table, and a powder room, and on the second level, separate staff quarters and utility room.

The interiors are crafted from the highest-quality, natural materials including cool stones, natural woods, and beautifully finished fixtures and fittings. Luxurious yet practical, they are durable, timeless, and quietly confident.



HELLENIC PROPERTIES



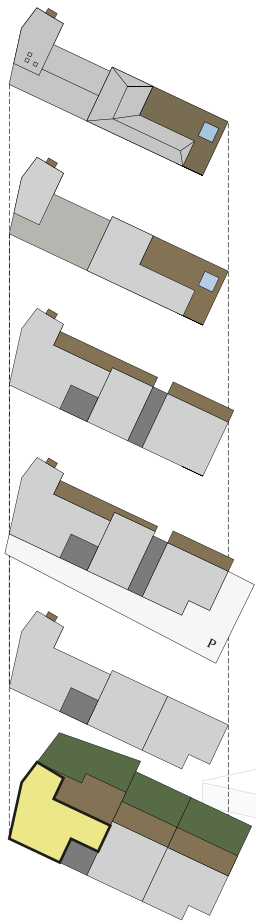
THE HERITAGE

# 01

## Garden Terrace One

BEDROOMS / 2  
TOTAL GROSS FLOOR AREA / 310 m<sup>2</sup>  
GARDEN / 190 m<sup>2</sup>

1 / LIVING ROOM - DINING AREA  
2 / KITCHEN  
3 / PRIMARY BEDROOM  
4 / SECONDARY BEDROOM  
5 / BATHROOM  
6 / WC



Roof

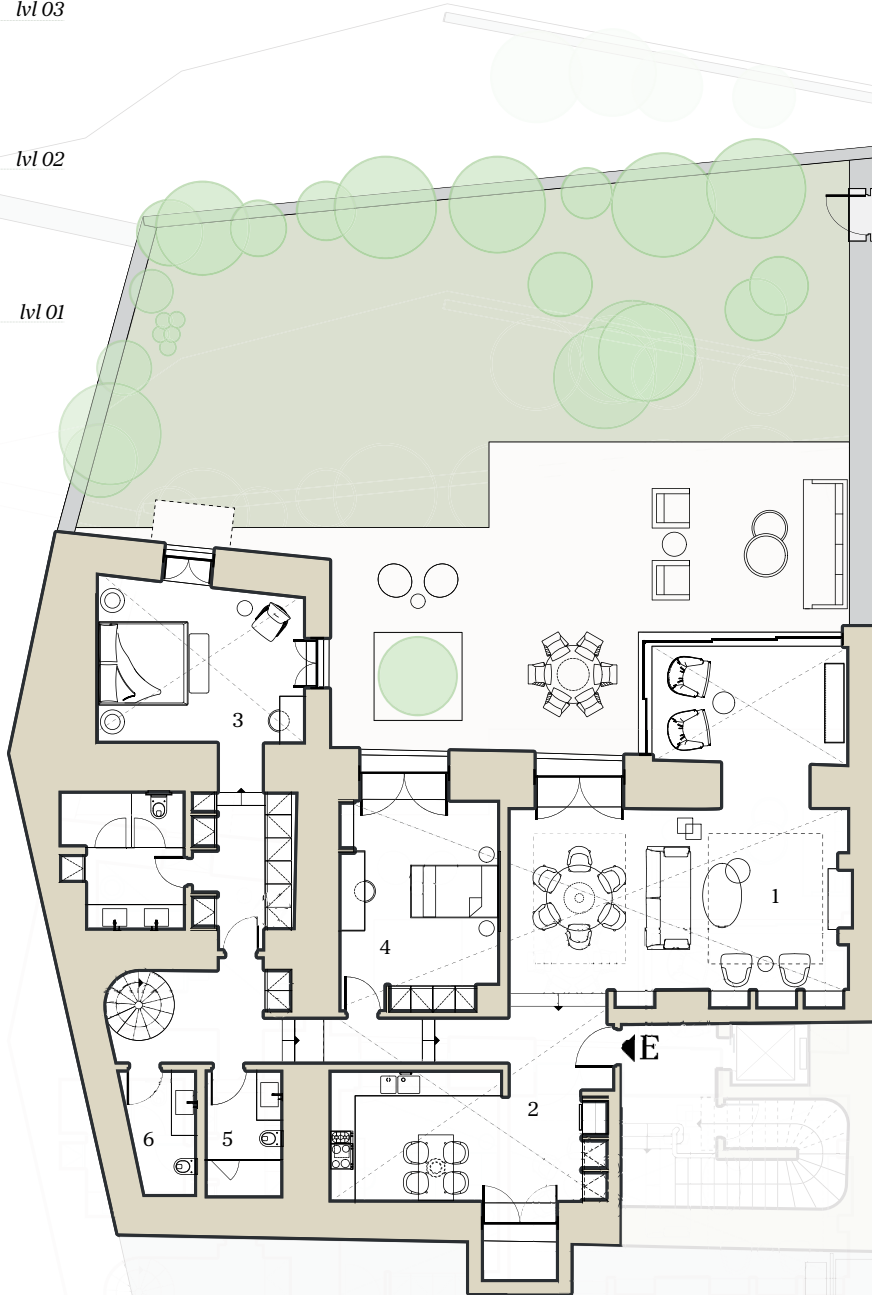
lvl 05

lvl 04

lvl 03

lvl 02

lvl 01



level 1  
219 m<sup>2</sup>



HELLENIC PROPERTIES



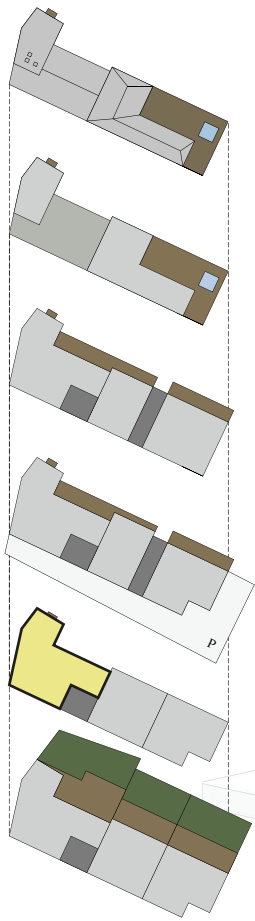
THE HERITAGE

# 01

## Garden Terrace One

BEDROOMS / 2  
TOTAL GROSS FLOOR AREA / 310 m<sup>2</sup>  
GARDEN / 190 m<sup>2</sup>

1 / SHIFT ROOM  
2 / LAUNDRY  
3 / BATHROOM



Roof

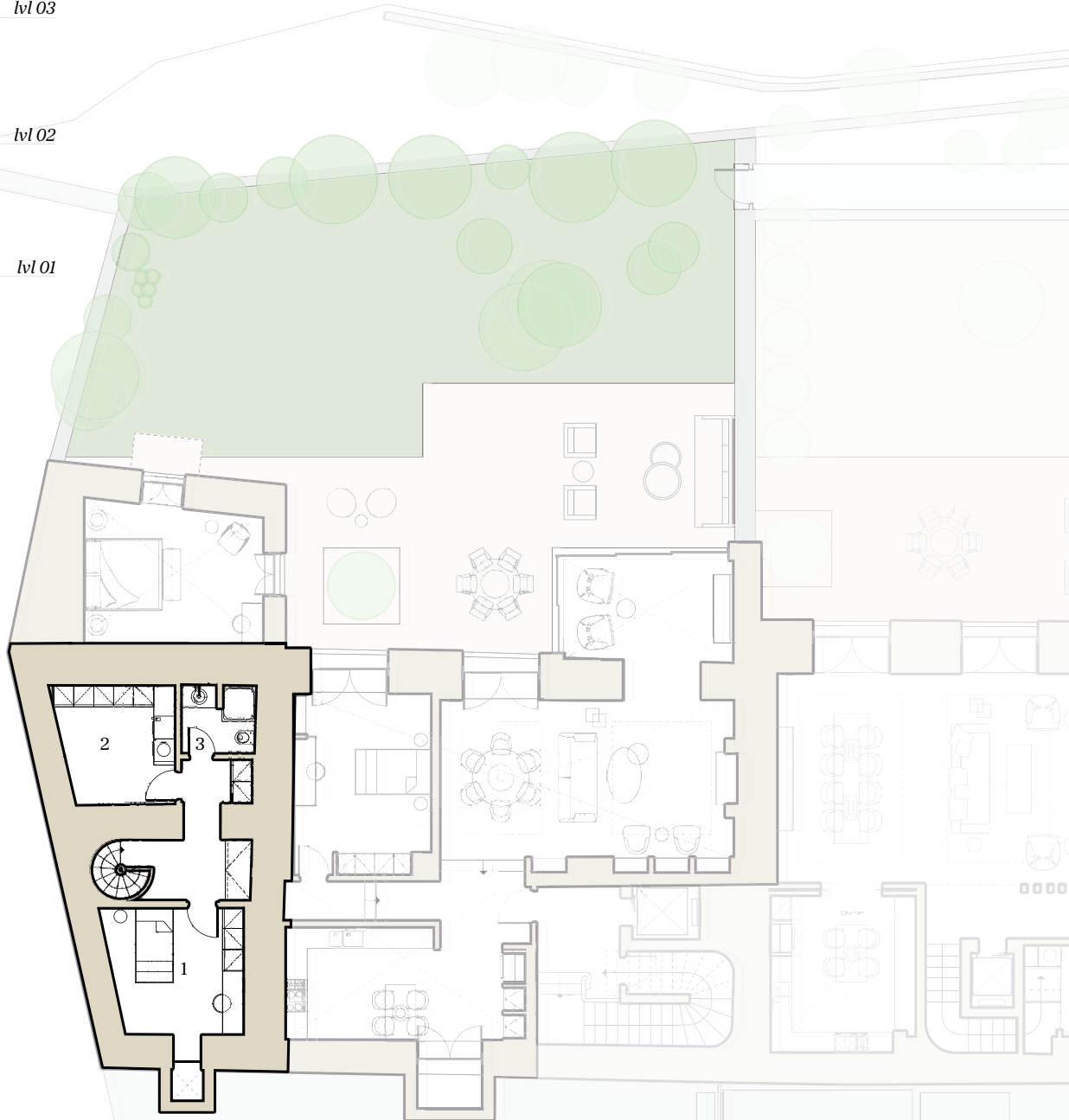
lvl 05

lvl 04

lvl 03

lvl 02

lvl 01



level 2  
91 m<sup>2</sup>



HELLENIC PROPERTIES