



THE HERITAGE

03

Garden Terrace Three

This impressive residence is meticulously designed to offer a boutique living experience enriched by thoughtful functionality and effortless elegance. Spread over 334 sqm and arranged over three levels, it is an expansive family home with a harmonious balance of space and proportion, ample natural light, and ventilation.

The accommodation comprises a double-height lounge with an open fireplace and formal dining area, which open up to the landscaped private gardens, a large kitchen with a casual dining table, three spacious bedrooms, including a primary bedroom with an en-suite bathroom and private balcony, a laundry-service room, staff quarters, an in-home, private elevator, and private parking.

The high-spec interiors are finished to an exceptional standard, showing a sensitive mix of timeless, classic design and contemporary style.



HELLENIC PROPERTIES



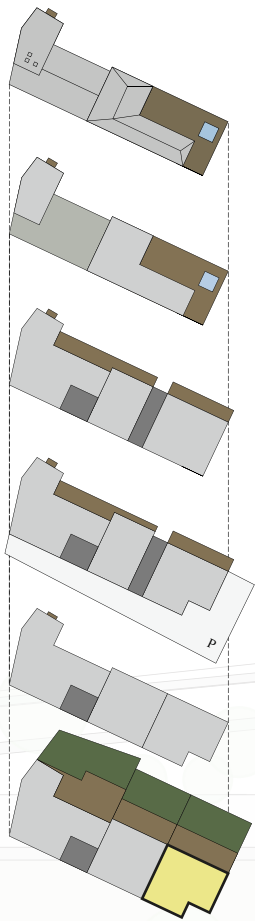
THE HERITAGE

03

Garden Terrace Three

ROOMS / 3
TOTAL GROSS FLOOR AREA / 334 m²
GARDEN / 147 m²
BALCONIES / 52 m²

1 / LIVING ROOM
2 / KITCHEN
3 / DINING AREA
4 / WC



Roof

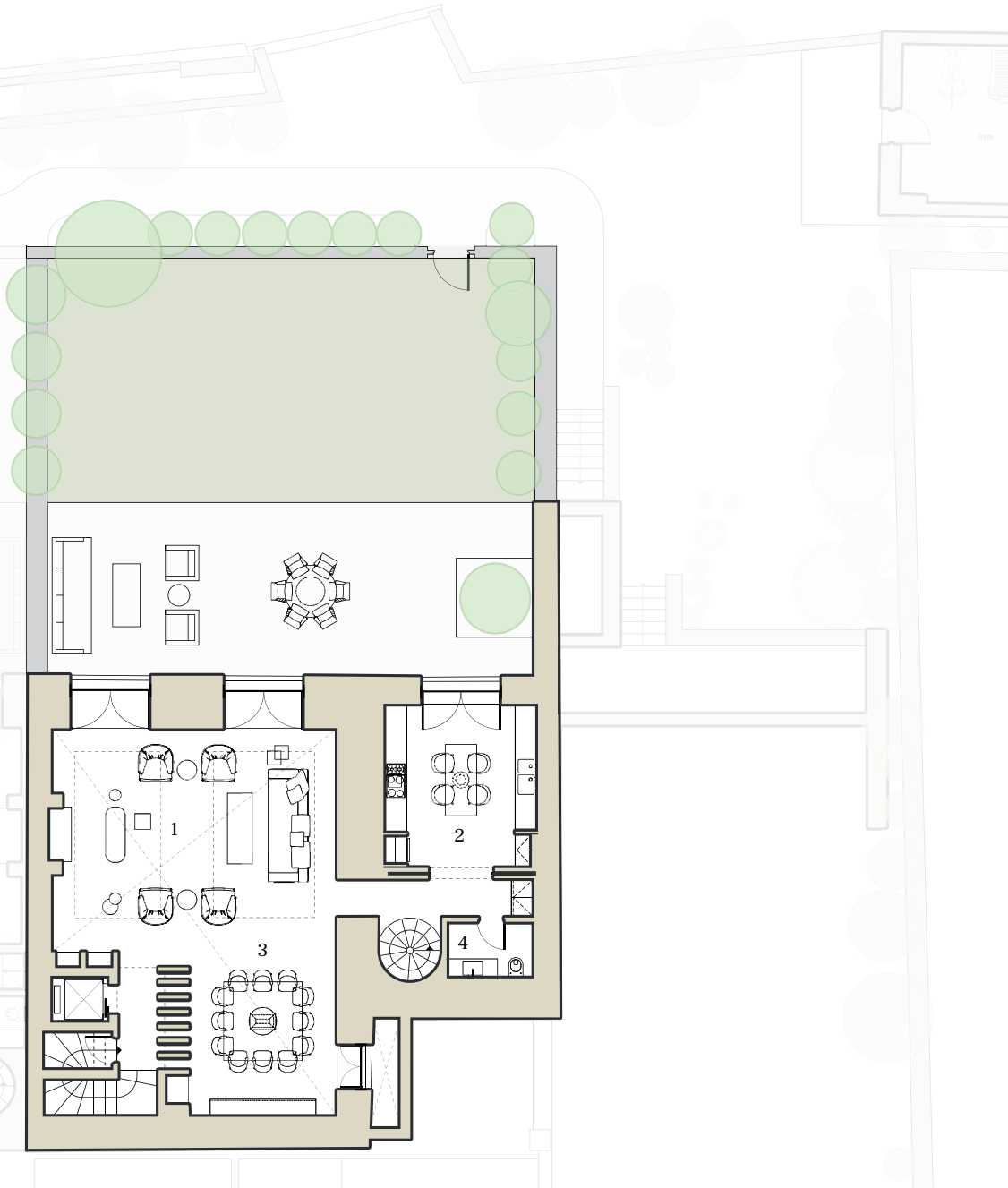
lvl 05

lvl 04

lvl 03

lvl 02

lvl 01



level 1
139 m²



HELLENIC PROPERTIES



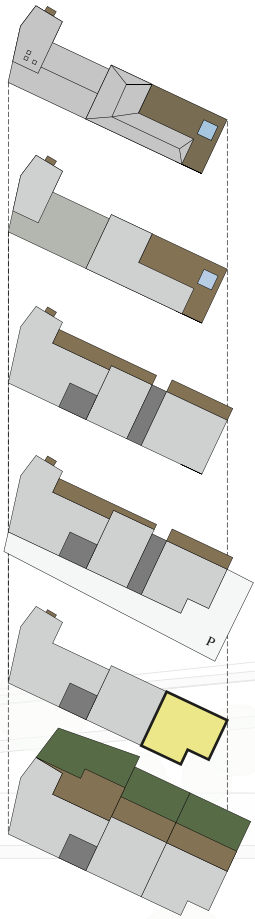
THE HERITAGE

03

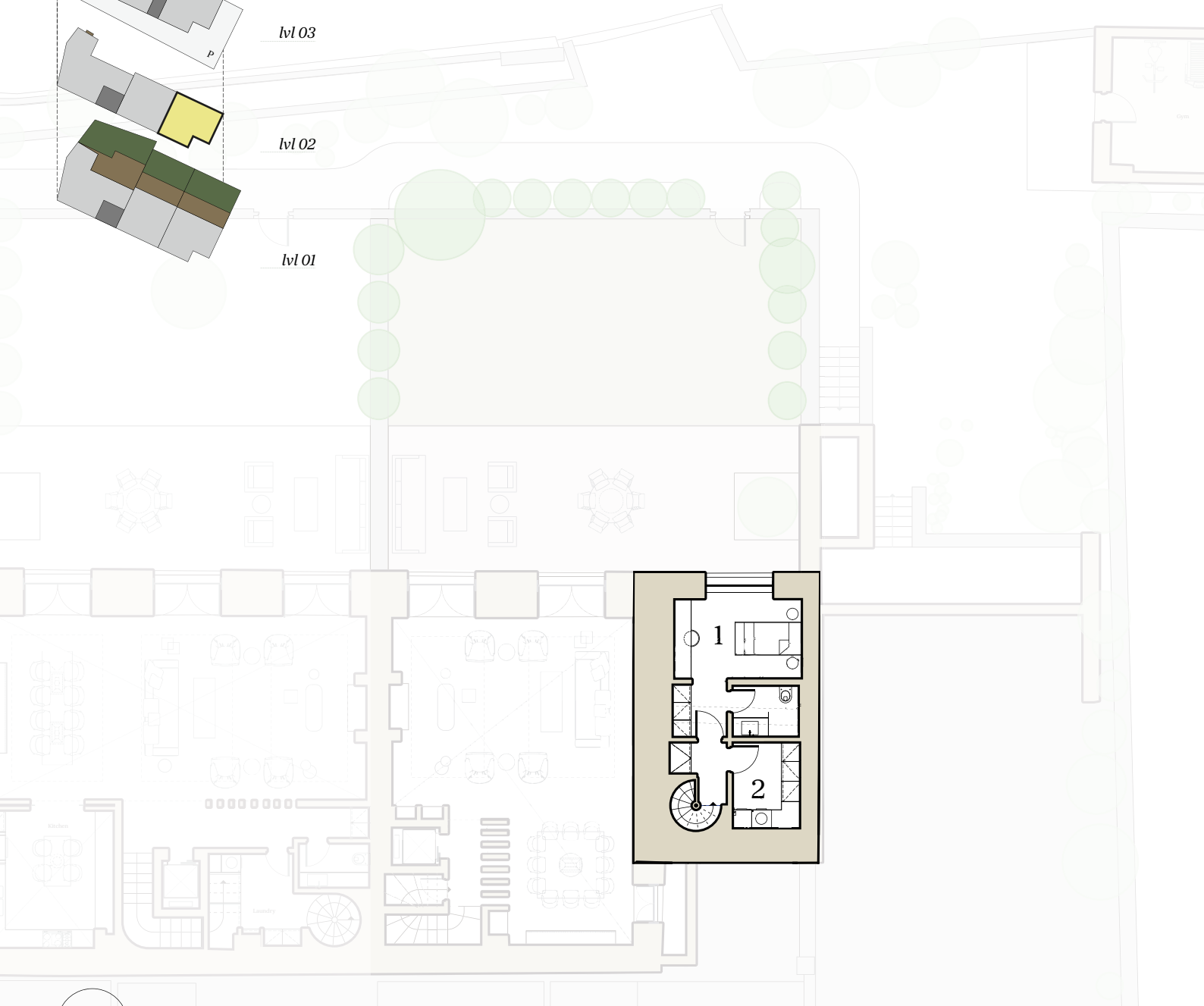
Garden Terrace Three

BEDROOMS / 3
TOTAL GROSS FLOOR AREA / 334 m²
GARDEN / 147 m²
BALCONIES / 92 m²

1 / SHIFT ROOM
2 / LAUNDRY



Roof
lvl 05
lvl 04
lvl 03
lvl 02
lvl 01



level 2
69 m²



HELLENIC PROPERTIES



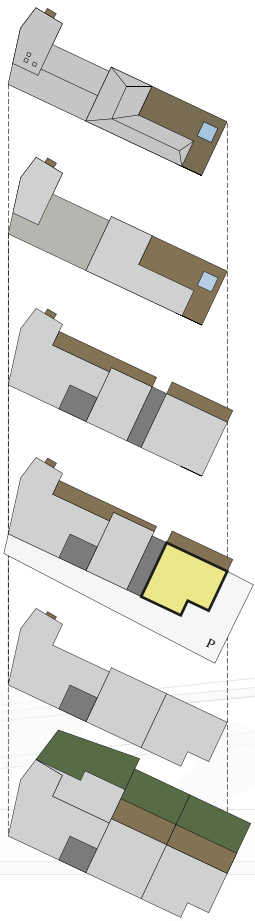
THE HERITAGE

03

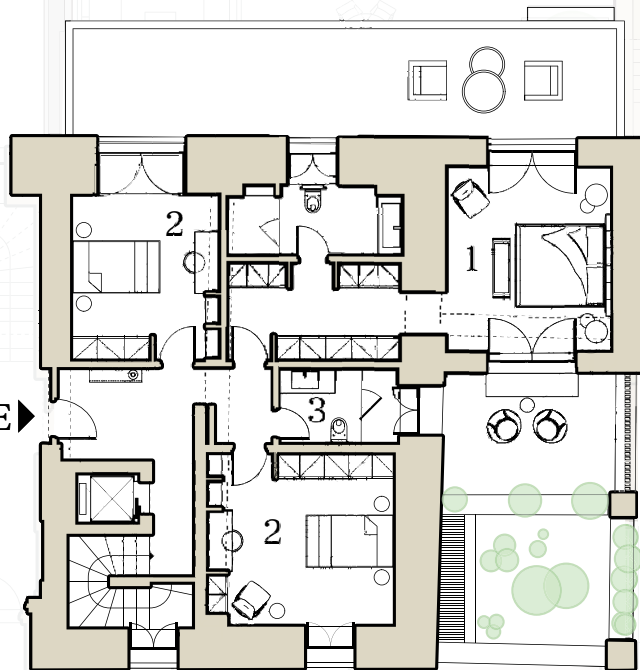
Garden Terrace Three

BEDROOMS / 3
TOTAL GROSS FLOOR AREA / 334 m²
GARDEN / 147 m²
BALCONIES / 52 m²

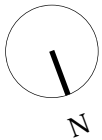
1 / PRIMARY BEDROOM
2 / SECONDARY BEDROOM
3 / BATHROOM



Roof
lvl 05
lvl 04
lvl 03
lvl 02
lvl 01



E ▶



level 3
126 m²



HELLENIC PROPERTIES