



THE HERITAGE

04

The Suite One

This stylish, functional, and flawlessly designed apartment suite exudes refined elegance in every corner of the property. It is set over 200 sqm with bright and clear spaces and floor-to-ceiling windows that maximise natural light throughout and open to a private balcony with garden views. The accommodation comprises a primary bedroom with an ensuite bathroom, a secondary bedroom with a separate bathroom, a generously sized living-dining area with an open fireplace, a kitchen with a casual dining table, and a powder room.

Carefully curated materials such as cool stones, natural woods, and soft neutral tones create a warm and comforting haven.



HELLENIC PROPERTIES



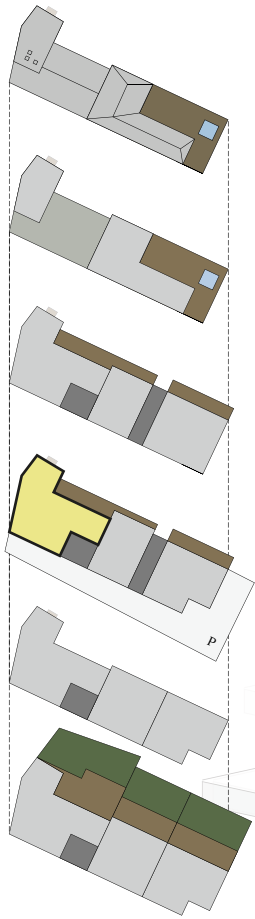
THE HERITAGE

04

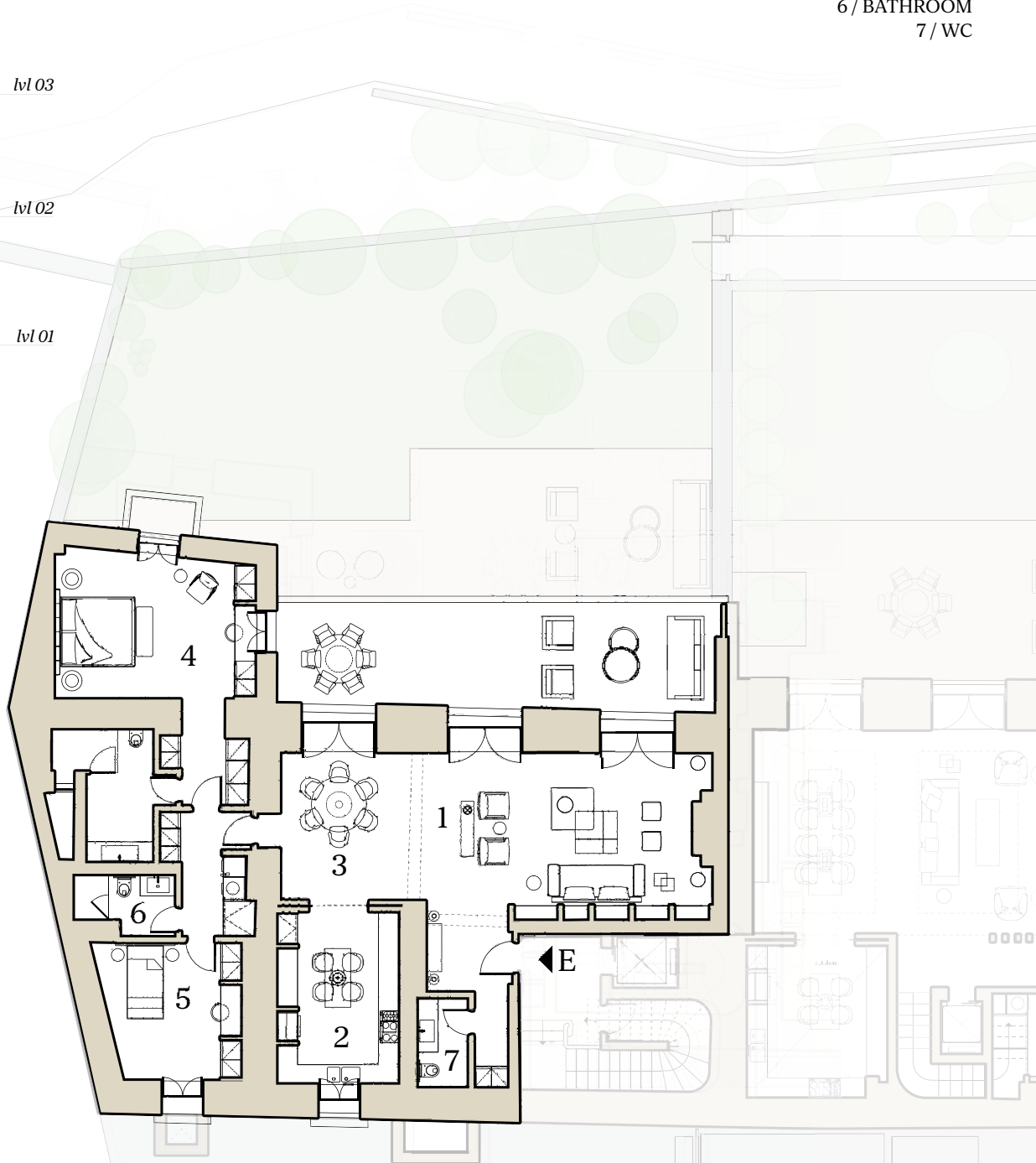
The Suite One

BEDROOMS / 2
TOTAL GROSS FLOOR AREA / 200 m²
BALCONIES / 47 m²

- 1 / LIVING ROOM
- 2 / KITCHEN
- 3 / DINING AREA
- 4 / PRIMARY BEDROOM
- 5 / SECONDARY BEDROOM
- 6 / BATHROOM
- 7 / WC



Roof
lvl 05
lvl 04
lvl 03
lvl 02
lvl 01



level 3
200 m²



HELLENIC PROPERTIES