



THE HERITAGE

# 06

## The Penthouse

This bespoke private residence enjoys inspiring design and sweeping panoramic views of the surrounding area and Mount Parnitha. It spans over 267 sqm and offers impressive entertaining space while also being ideal for family living.

It is arranged over two levels with the L-shaped upper-level housing all the living areas wrapped around an expansive rooftop terrace with a private open-air jacuzzi. Flooded with natural light, the indoor space is open plan and refined yet relaxed, comprising a large living and formal dining area with a feature fireplace, an impressive kitchen, and a utility room. The accommodation on the lower level consists of a primary bedroom with an ensuite bathroom and two secondary bedrooms, all with in-built wardrobes, a bathroom, and a utility room.

Every inch of this extraordinary apartment has been meticulously crafted for optimum elegance, with cool stones, natural woods, and soft neutral tones creating a warm and comforting haven.



HELLENIC PROPERTIES



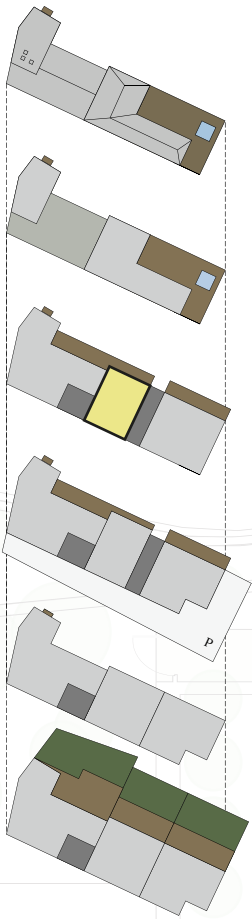
THE HERITAGE

06

The Penthouse

BEDROOMS / 3  
TOTAL GROSS FLOOR AREA / 267 m<sup>2</sup>  
BALCONIES / 162 m<sup>2</sup>

1 / PRIMARY BEDROOM  
2 / SECONDARY BEDROOM  
3 / BATHROOM  
4 / LAUNDRY



Roof

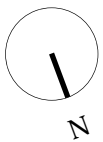
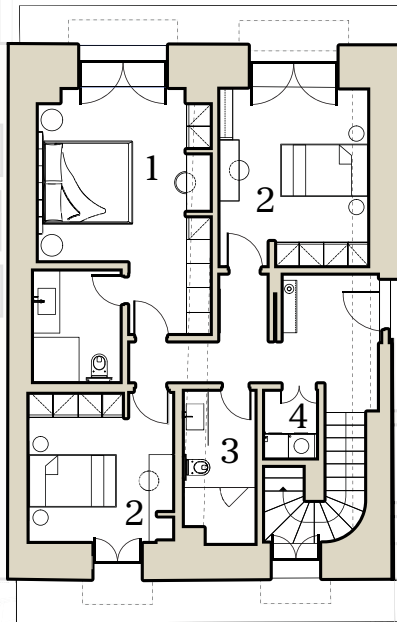
lvl 05

lvl 04

lvl 03

lvl 02

lvl 01



level 4  
102 m<sup>2</sup>



HELLENIC PROPERTIES



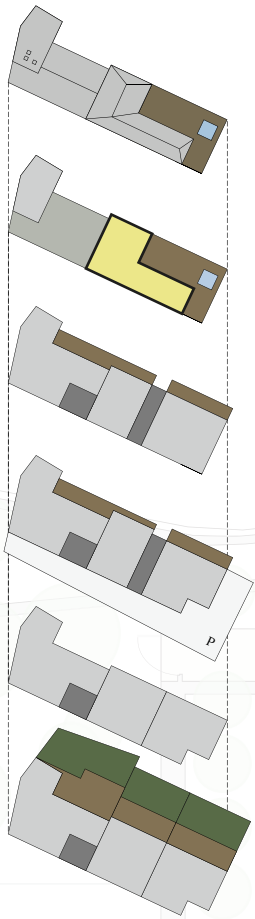
THE HERITAGE

06

The Penthouse

BEDROOMS / 3  
TOTAL GROSS FLOOR AREA / 267 m<sup>2</sup>  
BALCONIES / 162 m<sup>2</sup>

1 / LIVING ROOM  
2 / KITCHEN  
3 / DINING AREA  
4 / WC  
5 / STORAGE



Roof

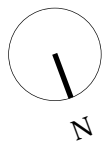
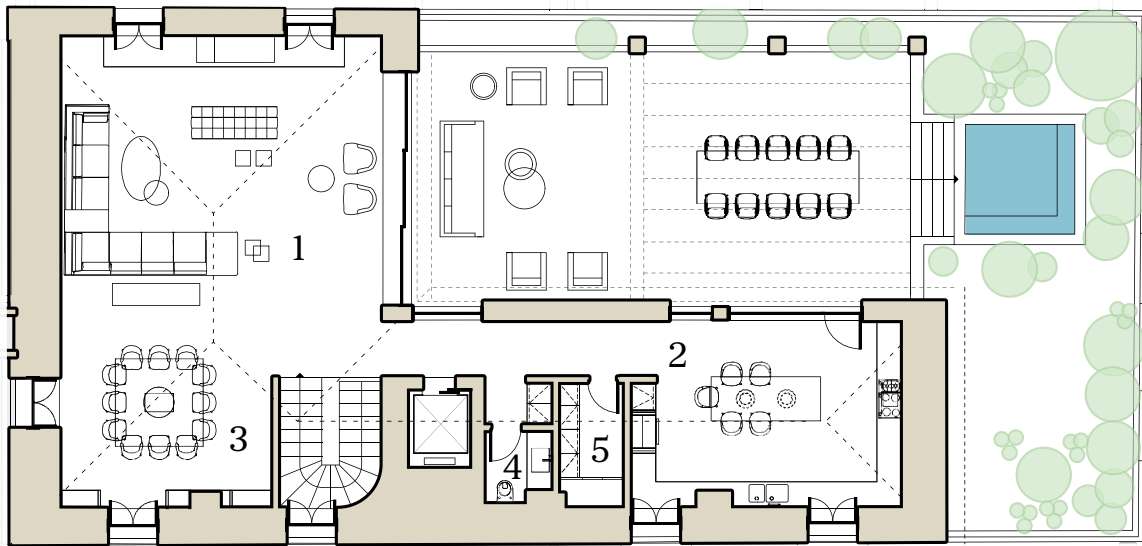
lvl 05

lvl 04

lvl 03

lvl 02

lvl 01



level 5  
165 m<sup>2</sup>



HELLENIC PROPERTIES